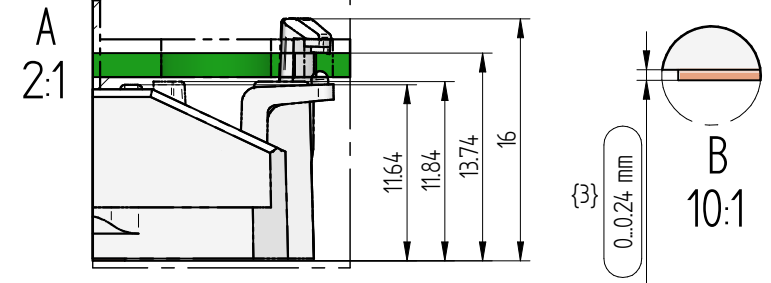
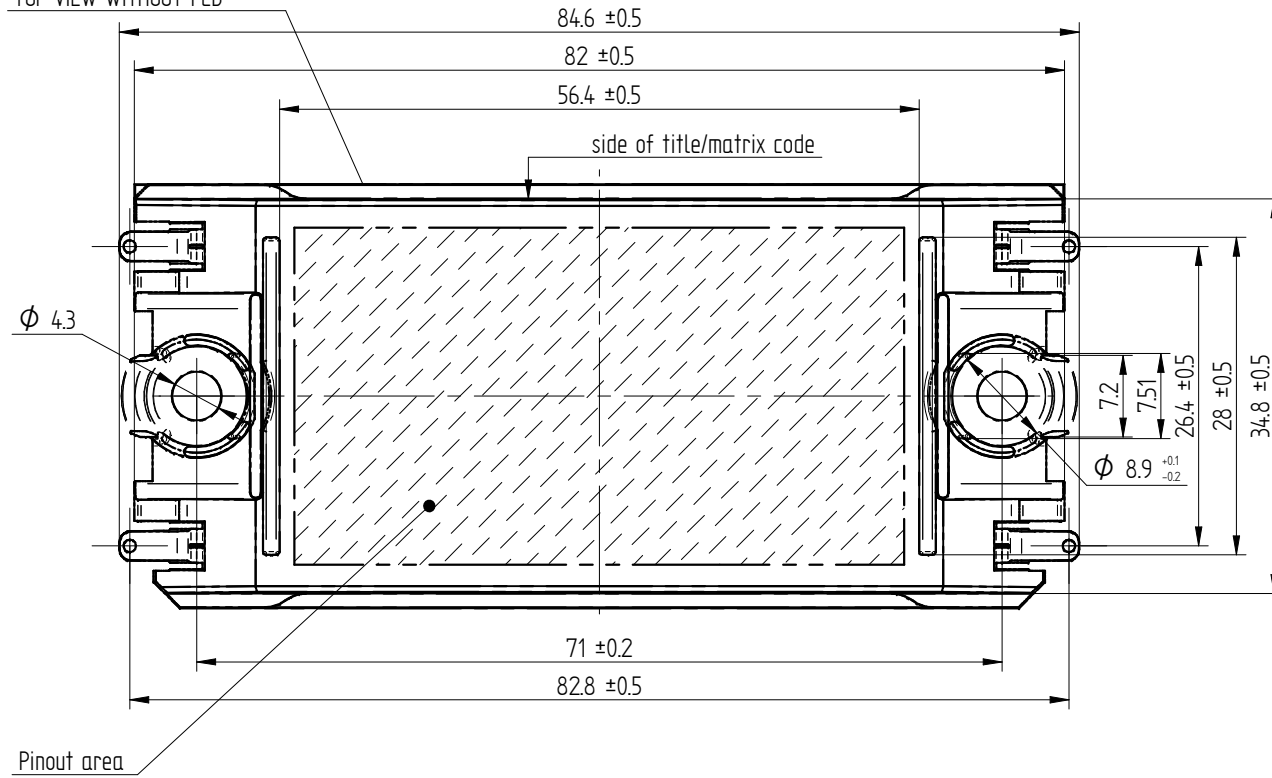


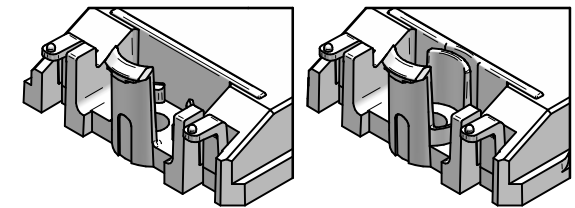
Convexity: 0.05..0.25 mm unless other specified in the outline drawing! {2}

{3}

TOP VIEW WITHOUT PCB



Design variants {2}



PCB specification according to the actual handling instruction document
Refer to the module datasheet for actual pinout and 3D-CAD model

03	03.07.2020	Stepheight, convexity, bridge thickness tolerance	T. Pribéli	Zs. Gyimóthy	Package Drawing	View scale 1,5:1		
02	19.10.2018	Additional member in construction, Convexity specification	M. Buza	Zs. Gyimóthy				
01	06.02.2015	Initial release	T.Gyetvai	Zs. Gyimóthy				
Rev.	Date	Alteration	Designed	Approved				
General tolerances ISO 2768 - m , K			Ps A4		Vincotech	Flow1-2C12*-PD Page 1/1		
Linear dimensions		x < 0.5 ±0.05	0.5 ≤ x < 6 ±0.1	6 ≤ x < 30 ±0.2			30 ≤ x < 120 ±0.3	120 < x ±0.5
Chamfers, radii		x < 0.3 ±0.05	0.3 ≤ x < 0.5 ±0.1	0.5 ≤ x < 3 ±0.2			3 ≤ x < 6 ±0.5	6 < x ±1
References	Inspectional dim:		Revision number (Rev.): *		IP Development	Drawing alteration in revision: {}		