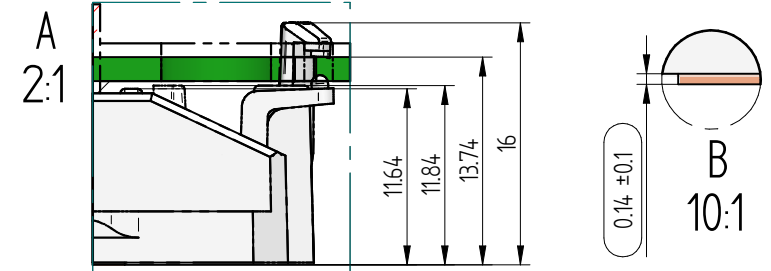
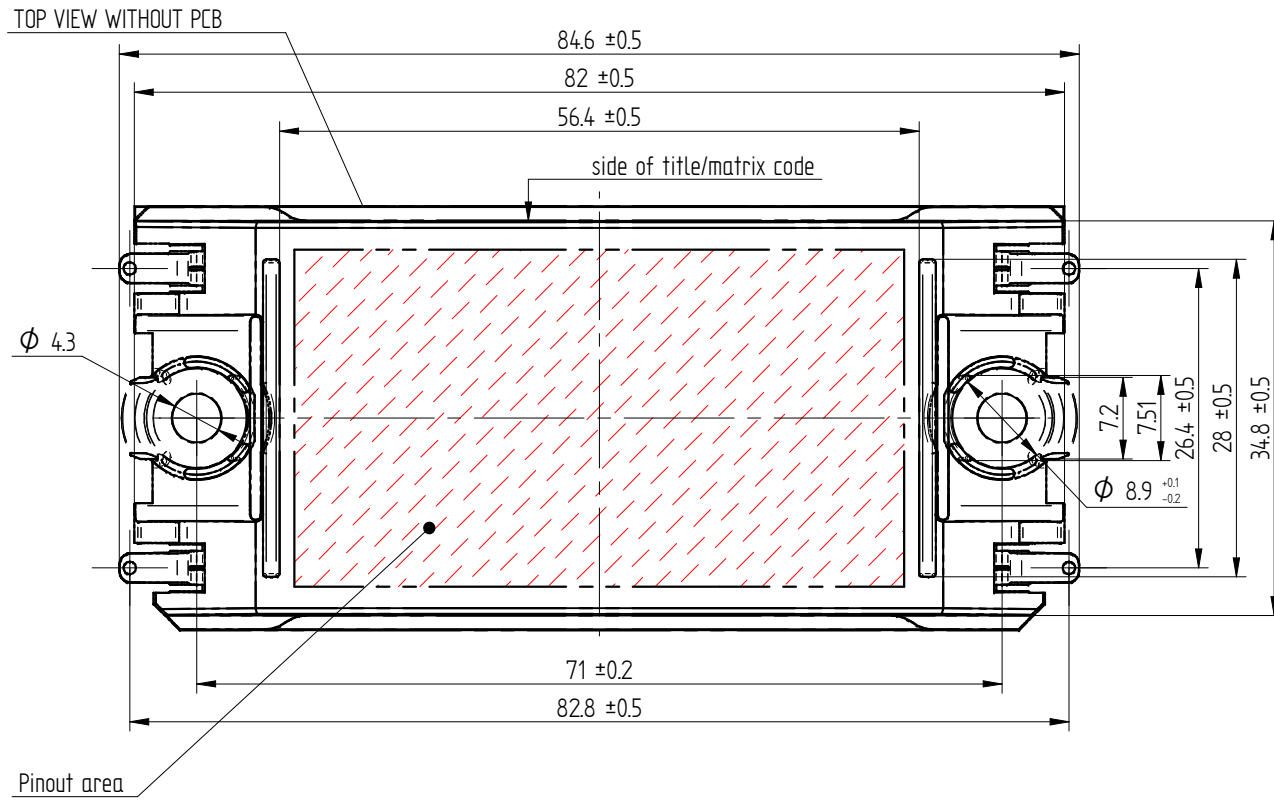
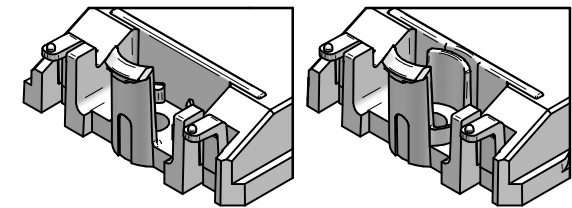


Convexity: 0.15 ±0.1 mm unless other specified in the outline drawing! {2}



### Design variants {2}



PCB specification according to the actual handling instruction document  
Refer to the module datasheet for actual pinout and 3D-CAD model

02	19.10.2018	Additional member in construction, Convexity specification	M. Buza	Zs. Gyimóthy	Package Drawing	View scale 1,5:1		
01	06.02.2015	Initial release	T.Gyetvai	Zs. Gyimóthy				
Rev.	Date	Alteration	Designed	Approved				
<b>General tolerances ISO 2768 - m , K</b>			<b>Ps A4</b>			Flow1-2C12*-PD Page 1/1		
<b>Linear dimensions</b>		$x < 0,5 \pm 0,05$	$0,5 \leq x < 6 \pm 0,1$	$6 \leq x < 30 \pm 0,2$			$30 \leq x < 120 \pm 0,3$	$120 < x \pm 0,5$
<b>Chamfers, radii</b>		$x < 0,3 \pm 0,05$	$0,3 \leq x < 0,5 \pm 0,1$	$0,5 \leq x < 3 \pm 0,2$			$3 \leq x < 6 \pm 0,5$	$6 < x \pm 1$
<b>References</b>		Inspectional dim:	Revision number (Rev.): *				<b>IP Development</b>	Drawing alteration in revision: {}