



FOR IMMEDIATE RELEASE

Contacts:

Product Communications:

Dr. Evangelos Theodossiu
Phone: +49 89 878067-149
Evangelos.Theodossiu@vincotech.com

Product Communications:

Karina Seifert
Phone: +49 89 8780 67-115
Karina.Seifert@vincotech.com

Vincotech Unveils New *flow7PACK* Line family

-- *flow7PACK 1200 V product family features a brake, three-phase inverter and the latest chip technology* --

Unterhaching, Germany – May 19 2015: Vincotech, a supplier of module-based solutions for power electronics, today announced the release of its new *flow7PACK* power modules engineered for motion control applications and exacting EMC standards.

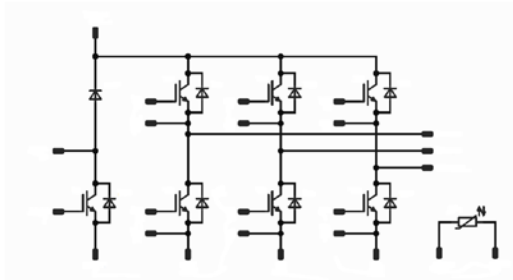
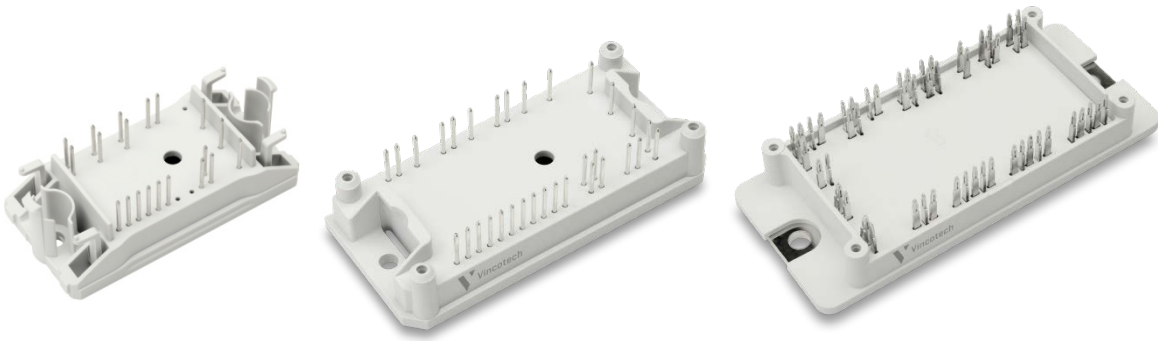
Power electronics designers are constantly seeking innovative, flexible solutions to satisfy the industry's tough demands for EMC, a small footprint and low system costs. The *flow7PACK* line is a remarkably flexible and convenient option for applications in which EMC presents a problem because of the PIM module's compact design. Equipped with a brake and three phase inverter, a *flow7PACK* module can serve as an independent solution that accommodates a locally separated single-phase or a three-phase input rectifier in the design.

Featuring low-inductance layouts, clever pin-outs and very compact 17 mm housings, *flow7PACK* power modules serve applications ranging from 8 A to 100 A. Options include the

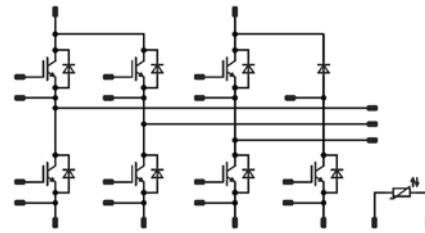
- *flow 0* housing (*flow7PACK 0*) rated for 8 A, 15 A and 25 A
- *flow 1* housing (*flow7PACK 1*) rated for 25 A, 35 A and 50 A
- *flow 2* housing with a base plate (*flow7PACK 2*) and rated for 50 A, 75 A and 100 A.

Solder pins and a built-in NTC are standard, while Press-fit pins and pre-applied phase-change material are available on demand.

Samples and datasheets are available on request. Serial production is slated to commence in the second half of 2015.



flow7PACK 0 / 1



flow7PACK 2

Vincotech is a trademark of Vincotech Holdings S.à.r.l.

flowPIM[®] is a trademark of Vincotech Holdings S.à.r.l.

ABOUT VINCOTECH

Vincotech – an affiliated company within the Mitsubishi Electric Corporation – develops and manufactures subsystems and electronic components and provides manufacturing services that help customers master complex challenges in electronics integration. Vincotech’s extensive portfolio encompasses standard and tailored solutions, engineering services, and technical support for customers worldwide. These products and services contribute to sustainable, environmentally sound solutions that help modern society embrace mega-trends and explore new avenues.

With approximately 500 employees worldwide, backed by vast experience and a long history in electronics integration, Vincotech leverages these assets to help customers achieve maximum market success.

To learn more about Vincotech, please visit www.vincotech.com.

#