

FOR IMMEDIATE RELEASE

Contacts:

Media Contact:

Karina Seifert
Phone: +49 (0)89 878067-115
karina.seifert@vincotech.com

Product Contact:

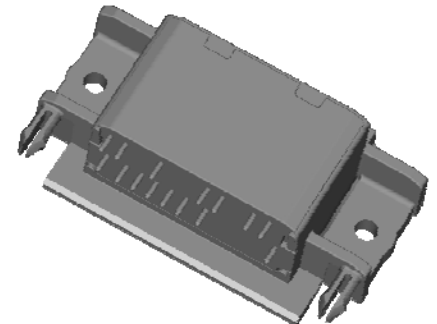
Andreas Johannsen
Phone: +49 (0)89 878067-145
andreas.johannsen@vincotech.com

VINCOTECH UNVEILS NEW 90° HOUSING FOR ULTRA COMPACT DRIVES

-- *flow90 0 enables 90-degree mounting for ultra slim bookshelf inverters* --

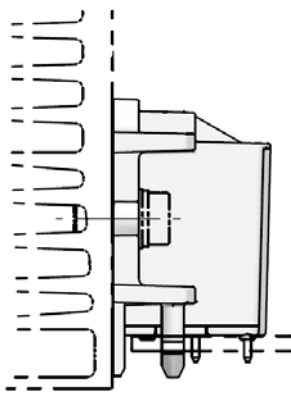
Unterhaching, Germany, May 14, 2013 – [Vincotech](http://www.vincotech.com), a supplier of module-based solutions for power electronics, presents a new housing size for 90° PCB mounting called *flow90 0*. The first product line to be equipped with this new housing is *flow90PACK 0* featuring six-pack topology.

The *flow90 0* housing follows up the **flow90 1 housing** that Vincotech rolled out so successfully a few years ago. The idea behind this design is to mount the power module at a 90° angle to the PCB, making it so much easier to connect the module to the heat-sink in case of limited space. Where other space-saving designs require expensive L-shaped heat-sinks, **flow90 0** works with standard shapes. Mounting could not be easier - it simply clips into the PCB.



flow90 0 2-clip housing

The **flow90 0** module's DCB with 33 x 66 mm is the same size as that of a standard Vincotech *flow 0*



Module mounted on heatsink and PCB

module. With the power and chip options being the same, it can be used for much the same range of products. The choice of layouts and topologies is limited only by the special pinning concept. The housing stands 33 mm tall and is 66 mm wide, making it the perfect package for mounting several modules in book-shelf sized systems.

The first product line to feature this new housing is **flow90PACK 0** comprising 1200 V modules rated from 8 to 35 A. Samples and data sheets are available on request. Serial production is slated to commence in the second half of 2013. Other topologies are available on request.

To learn more about Vincotech's power module products, please visit:

<http://www.vincotech.com/products/by-topologies.html>

ABOUT VINCOTECH

Vincotech – an independent operating unit within Mitsubishi Electric Corporation – develops and manufactures subsystems and electronic components and provides manufacturing services that help customers master complex challenges in electronics integration. Vincotech’s extensive portfolio encompasses standard and tailored solutions, engineering services, and technical support for customers worldwide. These products and services contribute to sustainable, environmentally sound solutions that help modern society embrace mega-trends and explore new avenues.

With approximately 500 employees worldwide, backed by vast experience and a long history in electronics integration, Vincotech leverages these assets to help customers achieve maximum market success.

To learn more about Vincotech, please visit www.vincotech.com.

Vincotech is a registered trademark.

#