



## FOR IMMEDIATE RELEASE

### Contacts:

### Product Contact:

Michele Portico  
Phone: +49 (0)89 878067-145  
Michele.Portico@vincotech.com

### Media Contact:

Karina Seifert  
Phone: +49 (0)89 878067-115  
Karina.Seifert@vincotech.com

## A NEW IPM WITH CIP TOPOLOGY – BETTER, FASTER IN; SMALLER, CHEAPER OUT

-- Slashing costs and shrinking footprints with the *flow*IPM 1B CIP 600 V

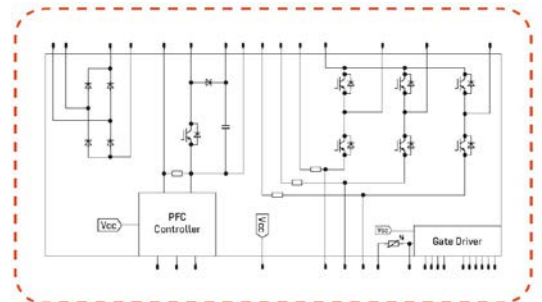
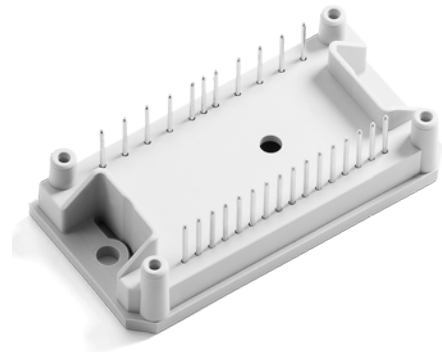
Unterhaching, Germany, August 19, 2016. Vincotech, a supplier of module-based solutions for power electronics, today announced the launch of a new, deeply integrated Intelligent Power Module for 600 V applications. The *flow*IPM 1B CIP 600 V features the powerful combination of a high-speed F5 IGBT with the switching performance of a MOSFET and a silicon carbide boost diode in the PFC circuit optimized for frequencies up to 150 kHz.

The high-speed F5 IGBT, paired with the silicon carbide boost diode in the PFC circuit, not only delivers impressive performance, it also drives down the cost of external passive components. The current rating of this new CIP (converter + inverter + power factor correction) topology housed in an integrated power module is also impressive: 10 A @ 80° C heat sink temperature.

The deeply integrated *flow*IPM 1B CIP 600 V module enables manufacturers to slash their overall system's size, cost, and time to market. It also features an inverter gate drive with a bootstrap circuit for high-side power supply, as well as emitter shunts (30 mΩ) for vastly improved motion control.

The new *flow*IPM 1B CIP 600 V modules come in 17 mm *flow* 1B housings. Versions in the 12 mm housing, with Press-fit pins and with phase-change material are available on request. Samples may be sourced on demand from our usual channels.

To learn more about Vincotech's *flow*IPM 1B CIP, please visit:



<http://www.vincotech.com/en/products/new-products/2016/flowipm1bcip.html>

To see Vincotech's entire range of power modules, please visit:  
<http://www.vincotech.com/products/by-topologies.html>

Vincotech is a registered trademark of Vincotech Holdings S.à.r.l.

#### ABOUT VINCOTECH

Vincotech – an affiliated company within the Mitsubishi Electric Corporation – develops and manufactures subsystems and electronic components and provides manufacturing services that help customers master complex challenges in electronics integration. Vincotech's extensive portfolio encompasses standard and tailored solutions, engineering services, and technical support for customers worldwide. These products and services contribute to sustainable, environmentally sound solutions that help modern society embrace mega-trends and explore new avenues.

With approximately 500 employees worldwide, backed by vast experience and a long history in electronics integration, Vincotech leverages these assets to help customers achieve maximum market success.

To learn more about Vincotech, please visit [www.vincotech.com](http://www.vincotech.com).

# # #