



FOR IMMEDIATE RELEASE

Contacts:

Product Communications:

Stefano Gallinaro
Phone: +49 89 878067-148
stefano.gallinaro@vincotech.com

Media Communications:

Karina Seifert
Phone: +49 89 8780 67-115
karina.seifert@vincotech.com

CHARGER, SMPS, SOLAR, OR ESS: VINCOTECH'S *flow*PHASE 0 IS THE WAY TO GO

-- Small, fast and affordable: *flow*PHASE 0 featuring NTC--

Unterhaching, Germany – November 06, 2015 – Vincotech, a supplier of module-based solutions for power electronics, today announced the release of its *flow*PHASE 0 family featuring NTC, a high-voltage half-bridge topology aimed to upgrade applications and drive down costs. This module is designed for charger, SMPS, solar, or ESS applications rated from 5 to 20 kW.

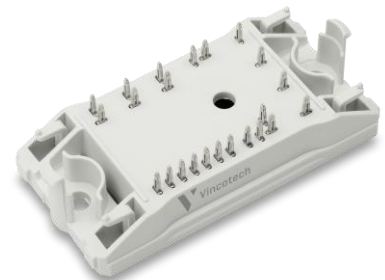
The new speedy *flow*PHASE 0 modules featuring NTCs not only deliver high power density; they also facilitate and enhance the engineering effort. Low- and high-speed versions are available to satisfy the requirements of different applications.

High-speed versions can serve to attain switching frequencies up to 50 kHz. The latest IGBT chip technologies from various silicon manufacturers, alongside full current fast and efficient diodes, are on board to keep conduction and switching losses low. These modules ship with an integrated thermistor for temperature monitoring and cost-effective Al₂O₃ ceramic or AlN DCB substrates for high thermal performance.

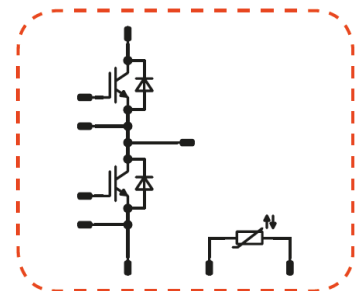
The new *flow*PACK 0 family comes in compact *flow* 0 housings 12 or 17 mm in height. Press-fit pins and phase-change material are available on request. These modules will be manufactured in series in early 2016.

To learn more about the *flow*PHASE 0 family featuring NTC, please visit: <http://www.vincotech.com/flowPHASE-0+NTC.html>

To see currently available products and select the best module for a given application, visit: <http://www.vincotech.com/products/products-overview.html>



*flow*PHASE 0 + NTC



Vincotech is a trademark of Vincotech Holdings S.à.r.l.

flowPIM[®] is a trademark of Vincotech Holdings S.à.r.l.

ABOUT VINCOTECH

Vincotech designs and builds premium-quality semiconductor power modules for motion control, renewable energy and power supply applications, setting performance standards for both off-the-shelf and custom products. An independently operating affiliate of Mitsubishi Electric Corporation staffed with around 500 people worldwide, Vincotech delivers fast, flexible and customer-focused solutions, service and support to empower customers' ideas.

To learn more about Vincotech, please visit www.vincotech.com.

#