



FOR IMMEDIATE RELEASE

Contacts:

Product Communications:

Stefano Gallinaro
Phone: +49 89 878067-148
Stefano.@vincotech.com

Media Communications:

Karina Seifert
Phone: +49 89 8780 67-115
Karina.Seifert@vincotech.com

DEEPER INTEGRATION FOR HIGHER EFFICIENCY – THE 3-in-1 SOLUTION

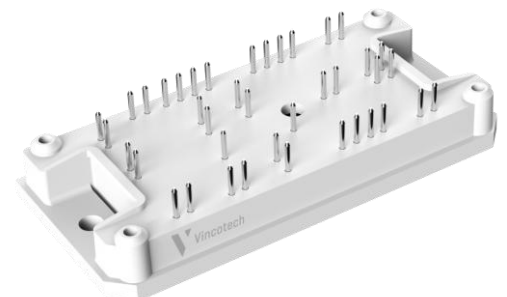
-- Vincotech's *flowRPI 1* family: a rectifier, dual PFC and an inverter, all combined in one module for welding, charger and SMPS applications--

Unterhaching, Germany – September 29, 2015 – Vincotech, a supplier of module-based solutions for power electronics, today announced the release of its [flowRPI 1](#) family, which is a new 3-in-1 solution integrating three topologies into one *flow 1* housing. This module is designed for welding, charger and SMPS applications rated from 1.5 – 7 kW.

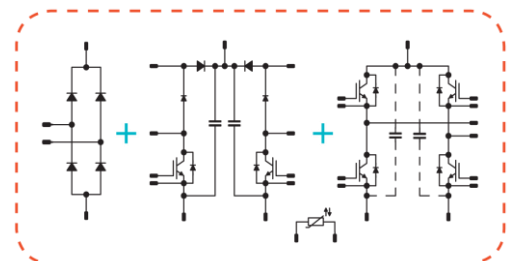
Designed for welding, charger and SMPS applications, the new *flowRPI 1* family combines a rectifier, a dual PFC and an inverter into one single module, which enables you to save design in time and cost. The modules combine a rectifier, with high efficiency low voltage drop diodes together with a dual PFC, featuring two legs ultrafast 650V IGBTs and diodes, integrated current sense diodes and integrated capacitors. The extremely wide input voltage range of the PFC, which is rated 120 – 220 V results in an enhanced current capability. Additionally, [flowRPI 1](#) family also features an inverter with H-Bridge open emitter topology, ultrafast 650V IGBTs and diodes as well as optional integrated capacitors.

The improved layout of the new *flowRPI 1* family offers a more EMC-friendly design. Featuring the latest IGBT H5 chip technologies the module provides ultra-fast switching speed as well as ultra-low conduction and switching losses. This latest generation module covers input power ranges from 1.5 up to 7 kW.

The new *flowRPI 1* family come in a *flow 1* 12 mm and 17 mm housing. Press-fit pins as well as phase-change material are available on request. These modules will be available in serial production beginning of 2016.



flowRPI 1 housing



For more information on the *flow*RPI 1 family, please view: <http://www.vincotech.com/flowRPI-1>

To see the currently available products and select the best module for your application, visit:
<http://www.vincotech.com/products/products-overview.html>

Vincotech is a trademark of Vincotech Holdings S.à.r.l.

ABOUT VINCOTECH

Vincotech designs and builds premium-quality semiconductor power modules for motion control, renewable energy and power supply applications, setting performance standards for both off-the-shelf and custom products. An independently operating affiliate of Mitsubishi Electric Corporation staffed with around 500 people worldwide, Vincotech delivers fast, flexible and customer-focused solutions, service and support to empower customers' ideas.

To learn more about Vincotech, please visit www.vincotech.com.

#