



FOR IMMEDIATE RELEASE

Contacts: Karina Seifert
Phone: +49 89 8780 67-115
Karina.seifert@vincotech.com

VINCOTECH ADDS *flow* E1/E2 PRODUCT FAMILY

-- The new benchmark for low-power industrial standard packages --

Unterhaching/Munich, Germany – June 05, 2018. Vincotech, a supplier of module-based solutions for power electronics, today announced the release of the new *flow* E1/E2 product family. Featuring the latest chip generations, these products also deliver superior thermal performance.

The industry's broadest portfolio of standard products just got bigger: Vincotech has added 12 mm *flow* E1/E2 packages to its product range for motion control applications. This new line goes to augment an offering that already includes PIM (*flow*PIM E1/E2) and sixpack (*flow*PACK E1/2) configurations for 600 V and 1200 V with extended power ranges up to 100 A. With these new modules, customers enjoy enhanced efficiency, greater supply chain security and more options for building the best in high-performance inverters.

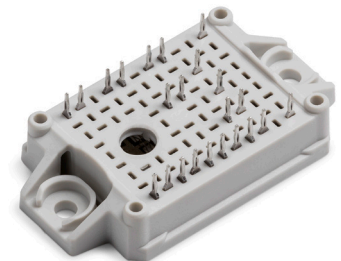
- Superior thermal performance for longer lifetime, higher power and greater reliability
- Real multiple chip sourcing (IGBT4, IGBT M7) enhances component supply security

To learn more about the new about our *flow* E product family, please visit

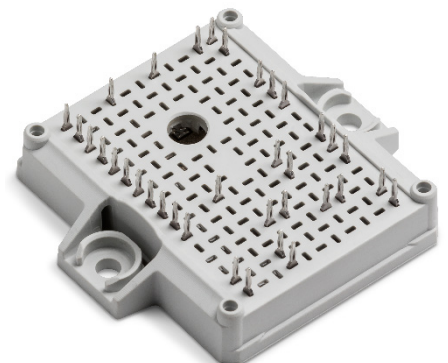
<http://www.vincotech.com/en/products/power/flow-E>

To see the currently available products and select the best module for your application, visit: <https://www.vincotech.com/product-search/>

flow E1



flow E2



Vincotech is a trademark of Vincotech Holdings S.à.r.l.

flowPIM® is a trademark of Vincotech Holdings S.à.r.l.

ABOUT VINCOTECH

Vincotech is a market leader in power semiconductor modules. An group company of Mitsubishi Electric Corporation, the company excels at developing and manufacturing high-quality electronic power components for motion control, renewable energy, and power supply markets. Vincotech understands customers' needs and furnishes both off-the-rack and applications-specific solutions to ensure they are met.

Tapping the considerable engineering and electronics integration skills and experience of some 800 employees worldwide, the company collaborates with the customer to develop the best solution for the given application. And Vincotech's workforce embraces the principle of reliable partnership to deliver on its performance promise of speed and flexibility to customers' best benefit.

To learn more about Vincotech, please visit www.vincotech.com.

VINCOTECH – EMPOWERING YOUR IDEAS

#