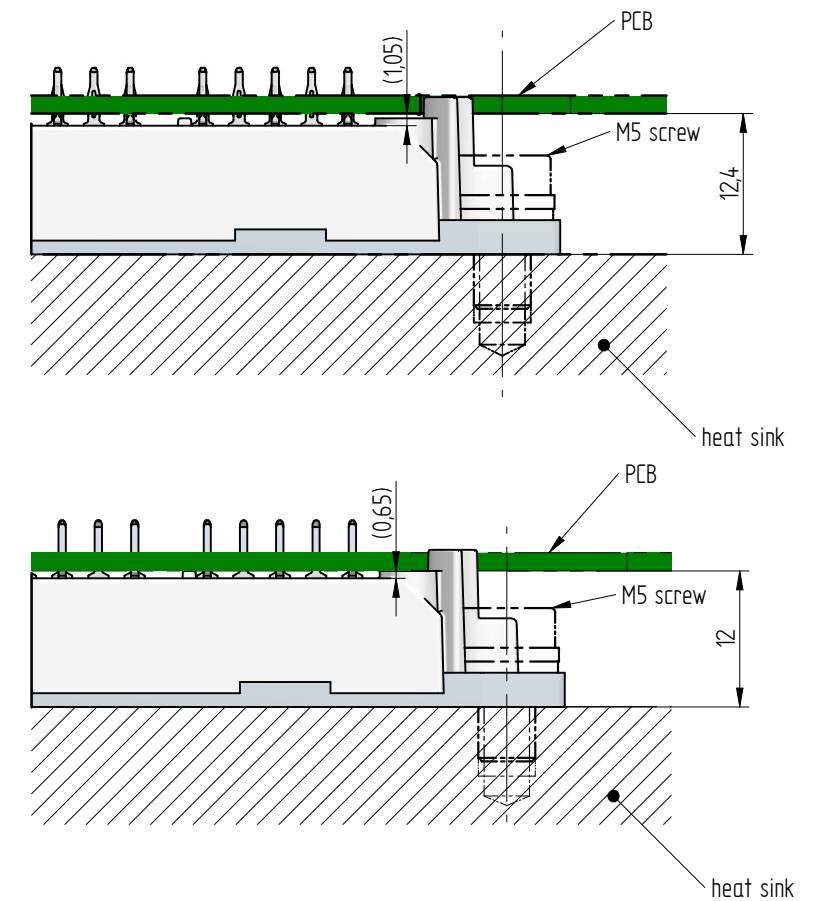


Mounted condition



PCB specification according to the actual handling instruction document
Refer to the module datasheet for actual pinout and 3D-CAD model
Pin position tolerance $\pm 0.4 \text{ mm}$

01.1	12.12.2024	Tolerance change	Géczy M.	Gyimóthy Zs.	Package Drawing	View scale 1,5:1
01	11.09.2024	Initial release	Géczy M.	Gyimóthy Zs.		
Rev.	Date	Alteration	Designed	Approved		
General tolerances ISO 2768 - m , K			Ps A3		Measuring numbering for FlowE3BP-4T12 *-PD	Page 1/1
Linear dimensions		x<0.5±0.05 0.5≤x<0.1 0.1≤x<0.2 0.2≤x<0.5				
Chamfers, radii		x<0.3±0.05 0.3≤x<0.5 0.5≤x<3±0.2 3≤x<6±0.5 6<x<1				
References		Inspectional dim: Revision number (Rev.): *				
			IP Development		Drawing alteration in revision: {}	