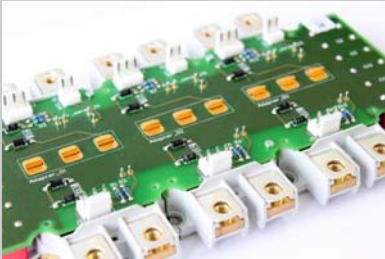


## Power Modules



**flowPHASE 2s**

# New Low Inductive Inverter Family

## **flowPHASE 2s enables high-performance switching for applications beyond 100 kW**

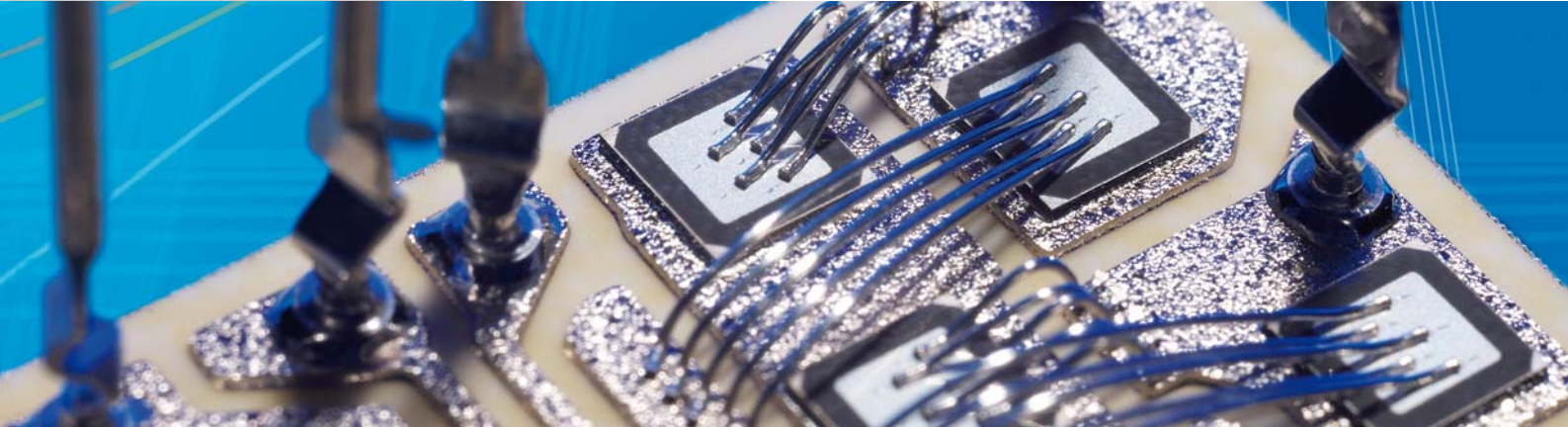
**flowPHASE 2s** is designed for fast-switching power applications like solar inverter, UPS and drives enabling high-performance switching for applications beyond 100 kW. These new modules provide an ultra-low inductive path for transient current.

Parasitic inductances are a major problem in power modules, particularly in fast-switching applications. To solve this problem, Vincotech has added an ultra-low inductive path for transient current to today's standard power module design. This reduces parasitic inductance in the new **flowPHASE 2s** to 7nH.

### **General Features:**

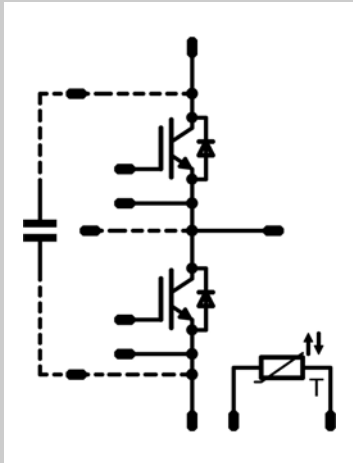
Reduced DC link stray inductances courtesy of:

- Capacitors on board the PCB
- Added ultra-low inductive path with internal bridges
- Parallel connection of the 3 modules' DC link inputs
- Excellent symmetry of the power semiconductor
- Excellent symmetry of the gate signal
- Higher nondestructive short-circuit current
- Less voltage overshoot at high current cutoff
- Optional external capacitors enhance dynamic response
- Works at higher switching frequencies up to 20 kHz



Power Modules

The following table informs you about all variations of the flowPHASE 2s module available:



| <i>flow</i> /PHASE 2s Product Overview |         |         |                           |
|--|---------|---------|---------------------------|
| Part-No                                | Voltage | Current | Semikron Equivalent       |
| 70-S2064PA300SA-P815F                  | 600 V   | 300 A   | IGBT3                     |
| 70-S2064PA400SA-P816F                  | 600 V   | 400 A   | IGBT3                     |
| 70-S2124PA200FE-P818F20                | 1200 V  | 200 A   | IGBT2Q Phantom Speed IGBT |
| 70-S2124PA200SC-P818F                  | 1200 V  | 200 A   | IGBT4                     |
| 70-S2124PA300SC-P819F                  | 1200 V  | 300 A   | IGBT4                     |

**flowPHASE 2s** modules come in 17-mm high flowSCREW 2 housings measuring 117 mm by 64 mm. They are in serial production and samples are available via the standard sales channels. For further information please download our new film about flowPHASE 2s:

[http://www.vincotech.com/products/new\\_products\\_landing.html](http://www.vincotech.com/products/new_products_landing.html)

To learn more about Vincotech's power modules portfolio, please visit:

<http://www.vincotech.com>